

“This document provides guidance for short- and long-term actions that should be taken to manage and restore eelgrass meadows in the Long Island Sound and serves as a resource for other estuaries in the region facing similar issues. This is a living document meaning that as new research, resources, and information becomes available, the gaps and required actions may change. This strategy focuses on previously known threats and expands on new threats exacerbated by climate change. **The work group that was convened will continue to meet to progress this strategy through the Long Island Sound Eelgrass Collaborative.**”

Collaborative funded by the LISS and facilitated by the CT National Estuarine Research Reserve (CT NERR).

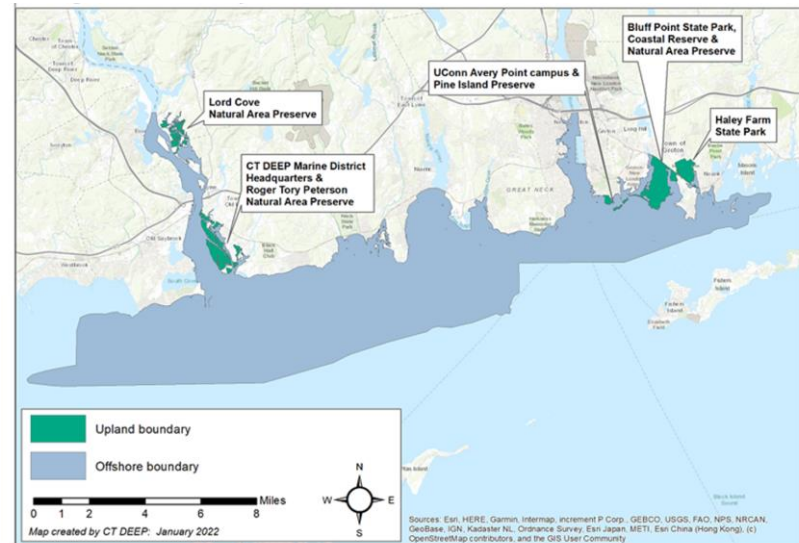
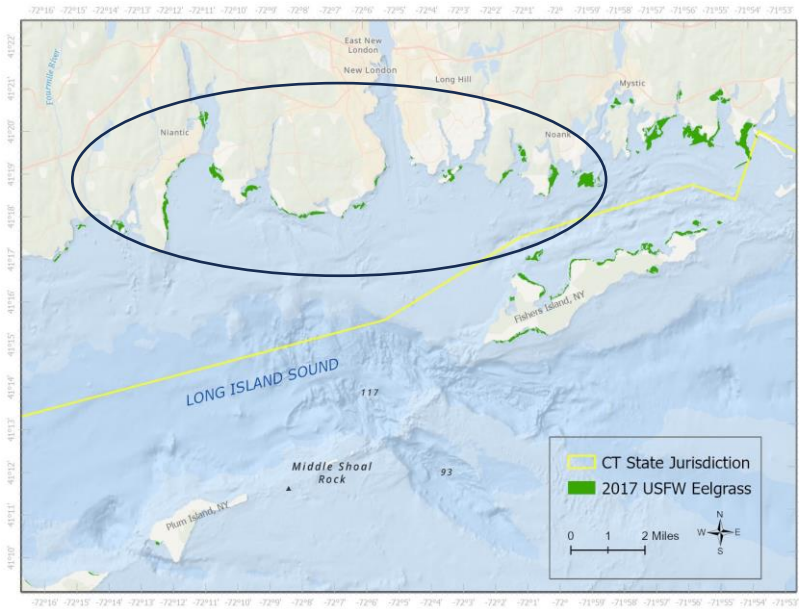
CT NERR encompass 53% of CT's existing eelgrass beds and 37% of Long Island Sound and Fishers Island Sound's beds.

Training program supports collaborative management initiatives.

Research program has active projects and partnerships investigating LIS eelgrass restoration and monitoring.



CT National Estuarine Research Reserve website



A. Year 1-2

- Create a Long Island Sound Eelgrass Collaborative ~~Network~~
- Work closely with state partners to identify and remove barriers to management and restoration
- Advise on updates to the Eelgrass Habitat Suitability Index Model
- Enhance continuous water quality monitoring efforts for eelgrass meadows and human activity
- Support and enhance remote sensing surveys
- Analyze historical data to confirm distribution trends

B. Year 2-3

- Collaborative continuation
- Eelgrass resiliency and common garden implementation
- Continue to conduct and expand aerial surveys

C. Year 3-5+

- Organize a workshop to identify trends, progress, and next steps
- Compile, synthesize, and analyze eelgrass and water quality monitoring data to understand variability
- Use EHSI model outputs for decisions about water quality and restoration projects
- Continue eelgrass resiliency and common garden experiments for potential expansion
- After 3-4 years, aim to have a large-scale restoration project installed in the Sound

Activity Timeline

	2023				2024											
	S e p t	O c t	N o v	D e c	J a n	F e b	M a r c h	A p r i l	M a y	J u n e	J u l y	A u g	S e p t	O c t	N o v	D e c
	1	2	3	4	5	6	7	8	9	10	11	12	1	2	3	4
Eelgrass Collaborative Meetings	█	█	█	█	█	█	█	█	█	█	█	█	█	█	█	█
M & R Barrier Meetings - Agencies		█	█	█	█	█	█	█	█	█	█					
Aquaculture Interactions - Lit. Review, Case Studies	█	█	█	█	█	█	█	█	█	█	█	█	█			
Aquaculture Interactions - Local Input						█	█	█	█	█	█	█	█	█	█	█
LISS Performance Reporting		█						█						█		

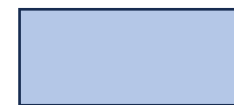
REG. BARRIERS AGENCY DISCUSSIONS – Proposed Staff List

State staff:

Last	First	Affiliation
Carey	Dave	CT DABA
Bartell	Matt	CT DABA
Dragan	Alissa	CT DABA
Jacobson	Sue	CT DEEP
Cooley	Yolanda	CT DEEP
Herz	Emily	CT DEEP
Rourke	Maeve	CT DEEP
Yamalis	Harry	CT DEEP
Lambert	DeAva	CT DEEP
Streich	Kelly	CT DEEP
Bauer	Cassie	NY DEC
Cambell	Della	NY DEC
Fofanah	Abdulai	NY DEP
Barnes	Deb	NY DEC
O'Neill	Vicky	NY DEC

Federal staff:

Last	First	Affiliation
Colarusso	Phil	US EPA
Ganju	Neil	USGS
Isleib	Jacob	USDA
Paton	Suzanne	USFWS
Pereira	Sabrina	NOAA
Reiss	Mark	US EPA
Rose	Cori	USACE
Rose	Julie	NOAA
Schillaci	Christopher	NOAA
Vanderbilt	Forrest	USGS
Williams	Andrea	USACE



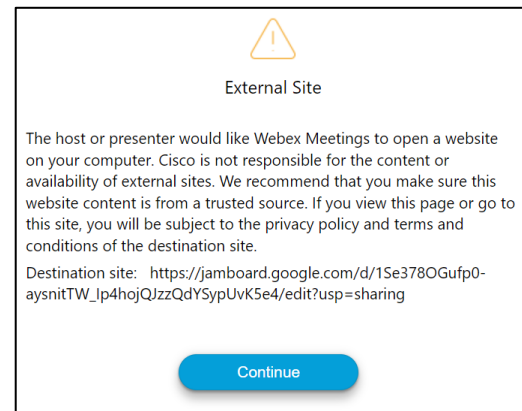
= aquaculture focused



= habitat focused

Jamboard Activity

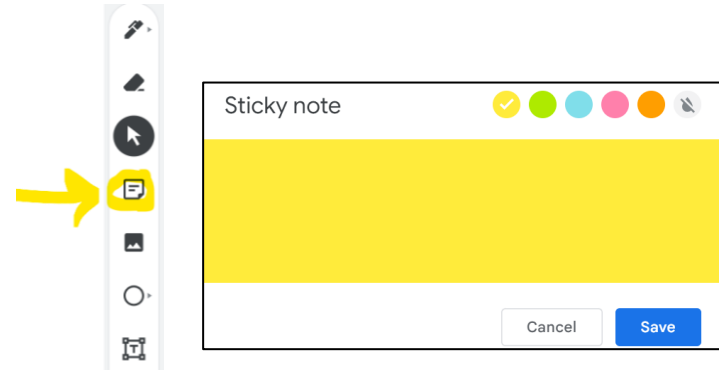
1. After clicking the link, you will receive an "External Site" warning. Simply hit *Continue*



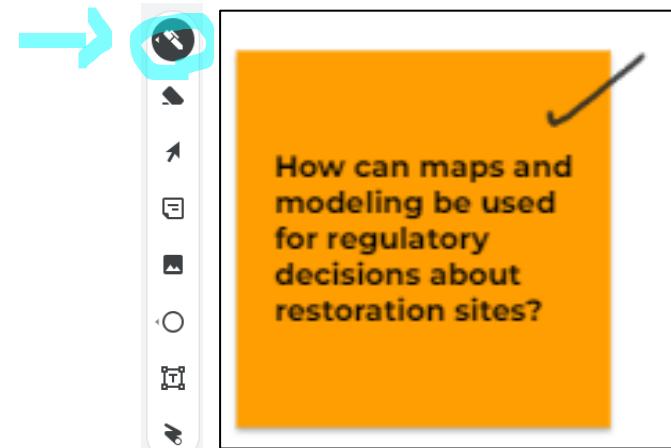
2. Once on the Jamboard, you can navigate between questions using the following icon at the top of the page



3. To add your ideas, use the insert sticky icon in the lefthand tool bar



4. If someone adds an idea you agree with, instead of adding again, simply mark the note with a *check* or *X* using the pen tool



5. Undo or zoom tools on the top left:

