

Funded  
by:



Facilitated  
by:

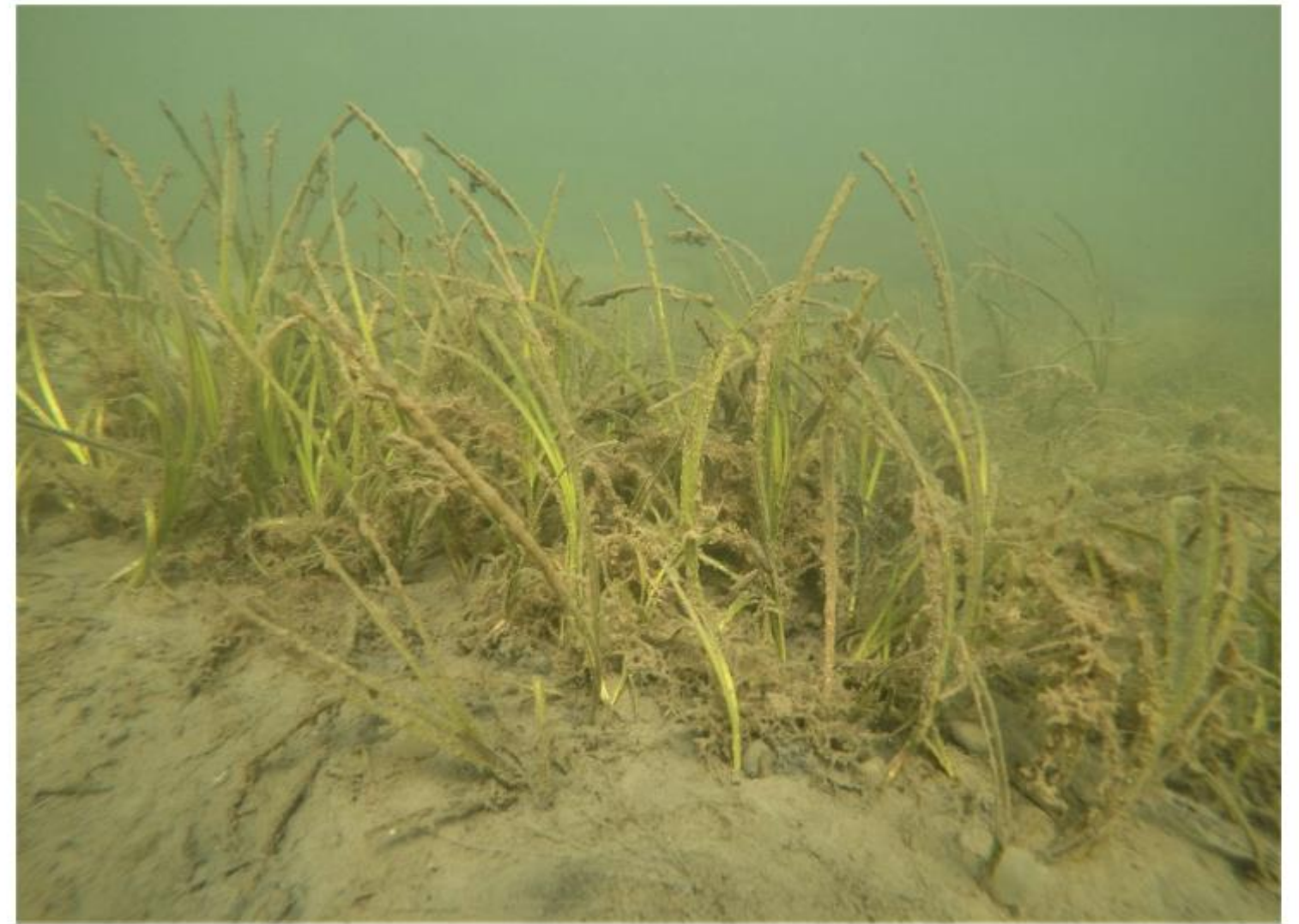


# LIS Eelgrass Collaborative Management Assessment

Emily Watling\*, [emily.watling@uconn.edu](mailto:emily.watling@uconn.edu); Jamie Vaudrey, [jamie.vaudrey@uconn.edu](mailto:jamie.vaudrey@uconn.edu);  
Katie Lund, [katie.lund@uconn.edu](mailto:katie.lund@uconn.edu); Connecticut National Estuarine Research Reserve and  
Department of Marine Sciences, University of Connecticut, Groton, CT



# Long Island Sound Eelgrass Management and Restoration Strategy



December 2022

The Formation of  
the LIS Eelgrass  
Collaborative

# Goals of the Eelgrass Collaborative:

1

Coordinate regional efforts

2

Provide input on other eelgrass projects

3

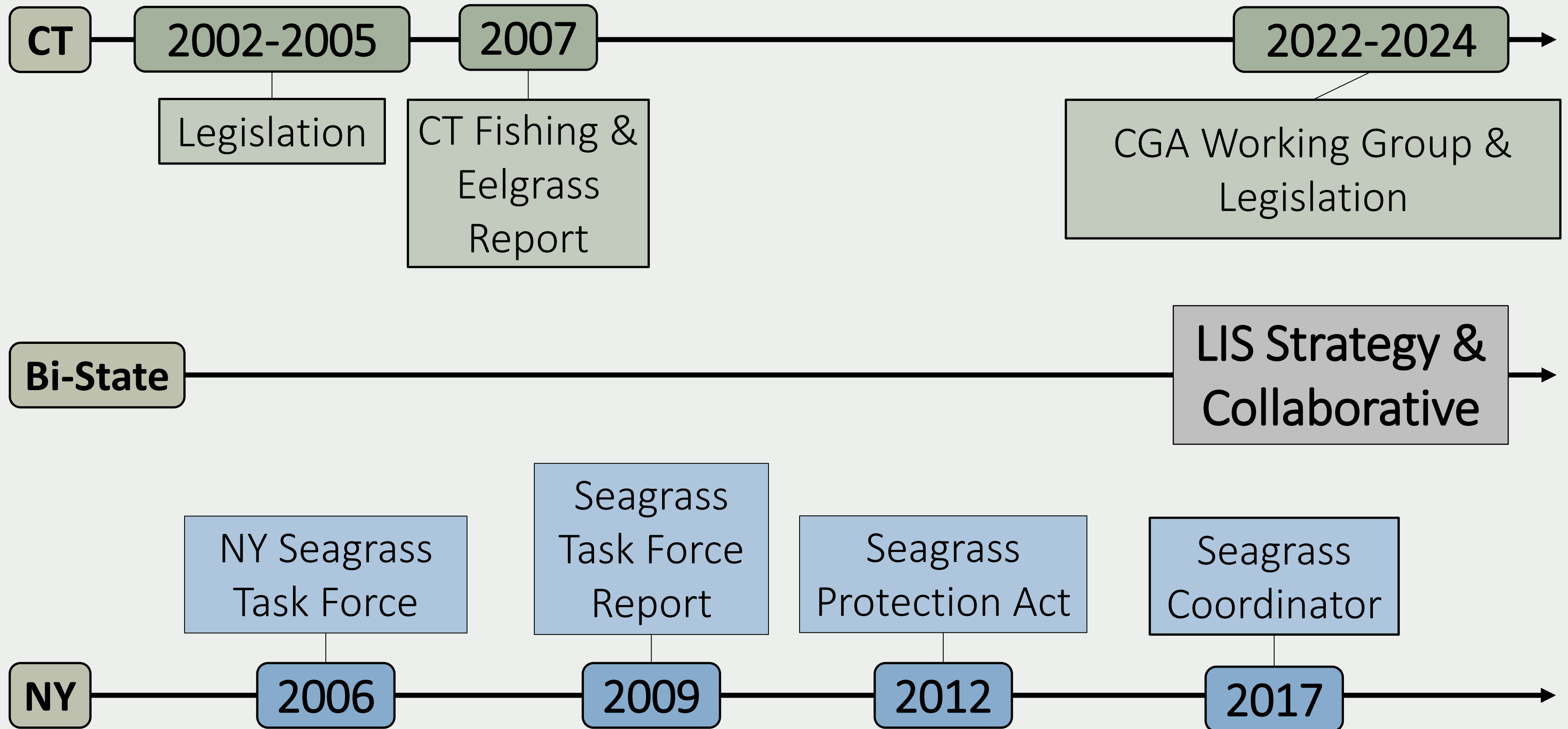
Improve bi-state collaboration

4

Management Assessment

- Report Review
- Agency Meetings

# Bi-State Eelgrass Timeline





## **Statutory Eelgrass Protections in New York and Connecticut**

By: Kristen Miller, Senior Legislative Attorney

May 20, 2024 | 2024-R-0061

### **Issue**

Summarize (1) New York's Seagrass Protection Act that protects eelgrass and other seagrasses and (2) any statutory protections for eelgrass in Connecticut.

This report updates OLR Report [2023-R-0275](#).

### **Summary**

New York's Seagrass Protection Act ([N.Y. Env'tl. Conserv. Law §§ 13-0701 to 13-0705](#)) imposes several requirements on the state's Department of Environmental Conservation (NYDEC) to protect seagrass in bays and coastal waters. Among other things, NYDEC must (1) designate seagrass



# A Review of Past Recommendations

NY - 2009

## Final Report of the New York State Seagrass Task Force:

Recommendations to the  
New York State  
Governor and Legislature

December 2009



CT - 2007



STATE OF CONNECTICUT  
DEPARTMENT OF ENVIRONMENTAL PROTECTION  
Gina McCarthy, Commissioner

DEPARTMENT OF AGRICULTURE  
F. Philip Prelli, Commissioner



## AN ASSESSMENT OF THE IMPACTS OF COMMERCIAL AND RECREATIONAL FISHING AND OTHER ACTIVITIES TO EELGRASS IN CONNECTICUT'S WATERS AND RECOMMENDATIONS FOR MANAGEMENT



SUBMITTED IN RESPONSE TO PUBLIC ACT 01-115

January 2007

Department of Environmental Protection  
Department of Agriculture



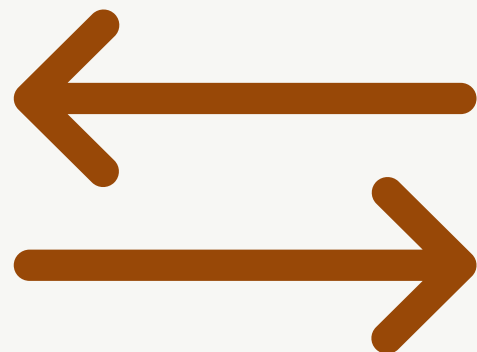
Report Recommendations	Progress			Notes (barriers, relevance, & needs)
	No progress	In progress	Complete	
<p><b>NY: Monitor Health &amp; Extent</b></p> <ul style="list-style-type: none"> <li>▪ Uniform mapping</li> <li>▪ SAV bed monitoring in: <ul style="list-style-type: none"> <li>▪ Long Island Sound</li> <li>▪ Peconic Estuary</li> <li>▪ South Shore Estuary</li> </ul> </li> </ul>		X		<p><b><u>NYDEC:</u></b></p> <ul style="list-style-type: none"> <li>▪ PEP &amp; LISS aerial survey scheduled 2024</li> <li>▪ SSER survey in 2018 - planning next one</li> </ul>
<p><b>CT: Eelgrass Research</b></p> <ul style="list-style-type: none"> <li>▪ Field surveys on effects of: <ul style="list-style-type: none"> <li>▪ Fishing &amp; boating activities</li> <li>▪ Waterfowl</li> </ul> </li> </ul>	X			<p><b><u>CT DEEP:</u></b></p> <ul style="list-style-type: none"> <li>▪ Program had to discontinue many activities</li> <li>▪ Struggled to keep core programs afloat</li> </ul>

# Agency Meeting Feedback: New Recommendations



Estuary-Specific Management  
Plan Development

Definitions for Eelgrass Meadows  
& Significant Impacts to Beds



Interstate Seed Transport-BMPs  
and Guidance



# Regulatory Recommendation: Interstate Seed Transport

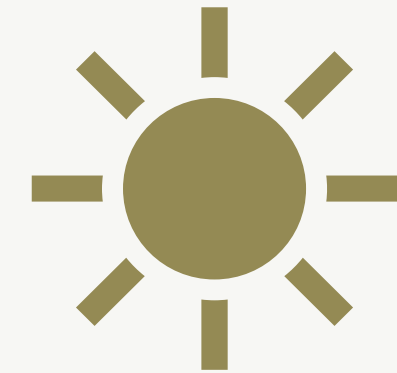


# Agency Meeting Feedback: Non-Regulatory



Numeric Water Quality Criteria

Research: Eelgrass Light & Depth Requirements



Best Boating Practices

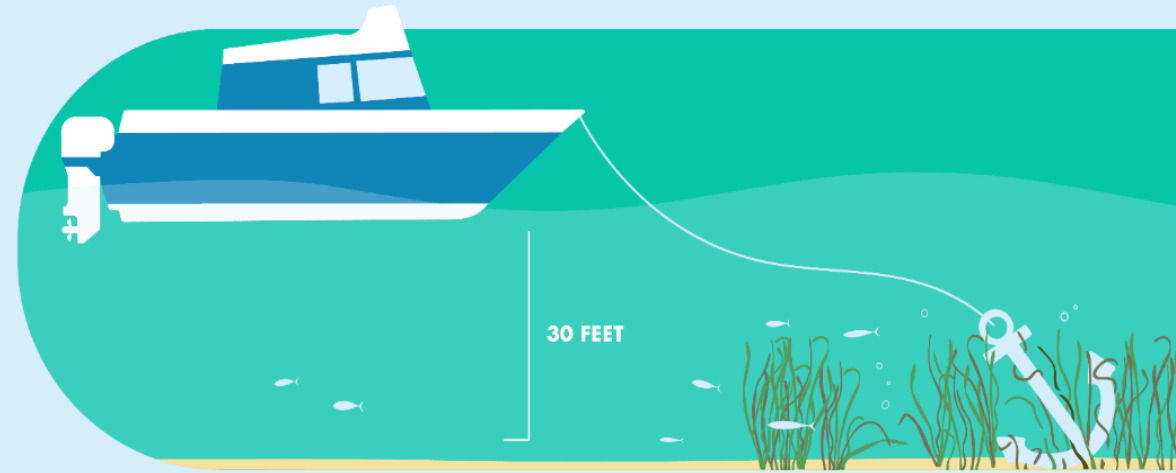


# YOUR ACTIONS MATTER

## Dragging Anchor

✗ Anchoring directly in the seagrass

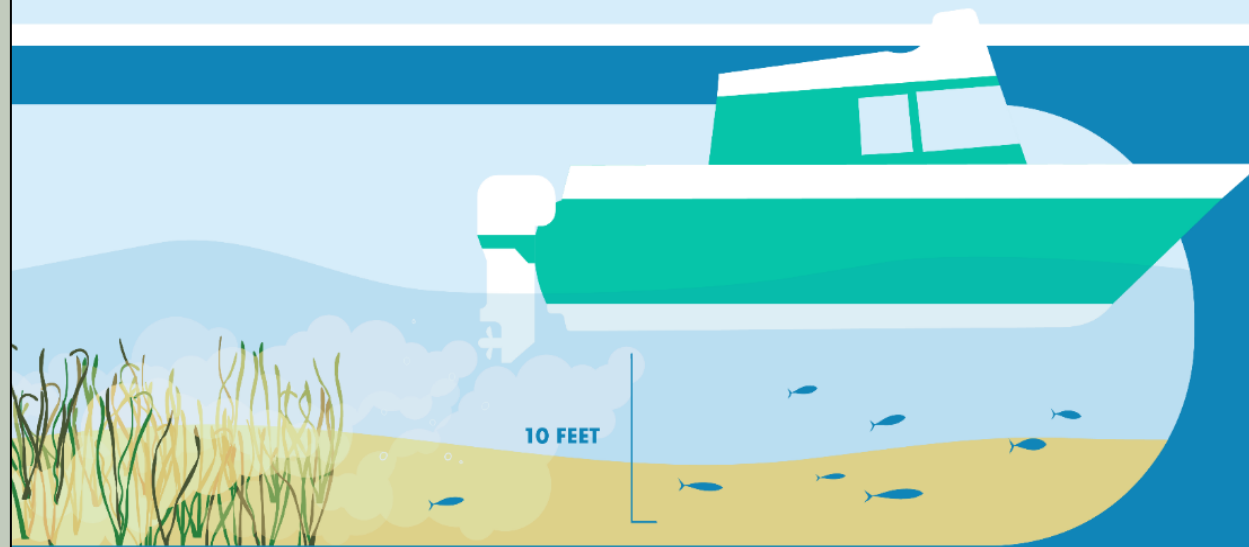
✓ Anchoring in the sand



## Motor Turbulance

✗ Revving and speeding in shallow water

✓ Slowing down in shallow water



## Propeller Scarring

✗ Uprooting or slicing eelgrass with propellers

✓ Trimming up your motor and idling safely

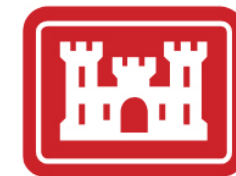


LOOK  
BEFORE  
YOU DROP





**UConn**



**US Army Corps of Engineers.**



**Coordinating  
with other  
regional efforts**