

41°16'39.4"N

71°56'57.9"W

09/10/24

barleyfield

LONG ISLAND SOUND EELGRASS MAPPING INTERCOMPARISON STUDY



Long Island Sound Study

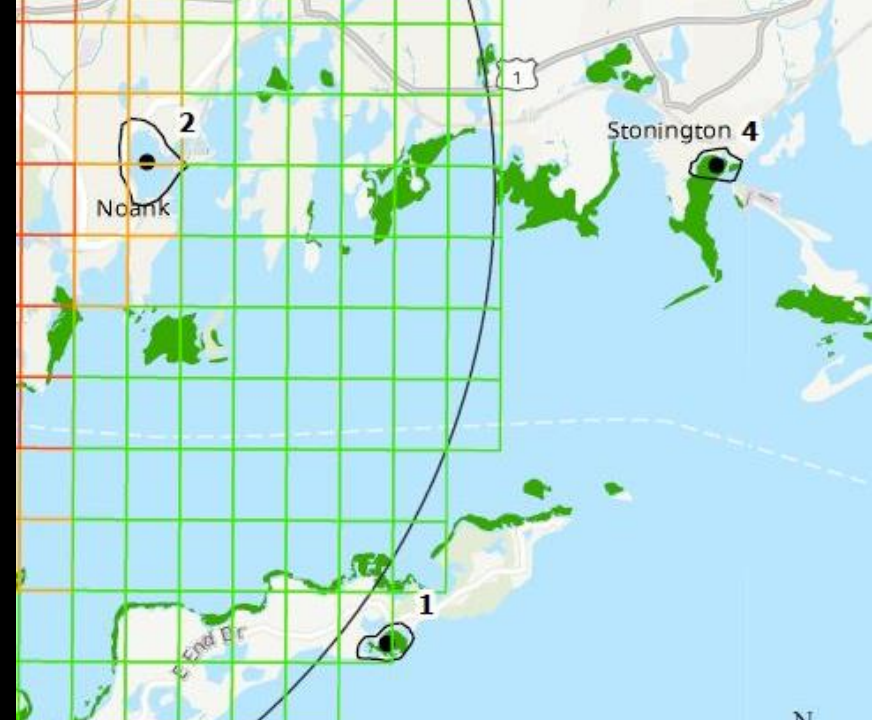
A Partnership to Restore and Protect the Sound

THE
UNIVERSITY
OF RHODE ISLAND



DRONE IMAGERY (~400 FT AGL)

- Three sites were chosen for drone surveys: Beebe Cove, Stonington, and Barleyfield.
- Only the September Stonington survey is left to do.
- These surveys were done in partnership with CT DEEP.



DIVER SURVEYS

- Conducted at the same sites as the drone surveys (June and September)
- Three 40 m diameter plots per site.
- Within each 40 m circle, percent cover assessments were done for 12 1m² plots



AERIAL SURVEYS (16,000 FT AGL)

- Finalized in three separate flights: June 28th, July 15th, and July 26th
- Draft ortho-imagery delivered to URI on August 28th for use in the region-wide mapping effort
- Draft Imagery: 628 individual photos (over 2TB)



UNDERWATER VIDEO SURVEYS

- Fisher Island, New London West, and Orient Point sites have all been completed.
- One site remaining: New London East
- No eelgrass observed in the Niantic River

