



# Connecticut NATIONAL ESTUARINE RESEARCH RESERVE



*Bluff Point State Park (Judy Benson, CTSG)*

---

## Summer is in full swing!

The summer is upon us and the Reserve is buzzing with activity. In this issue, learn more about our new research projects, meet our summer team, and discover ways you can get out and enjoy the Reserve.

[Visit the Reserve's Website](#)



---

## A message from Jamie Vaudrey, the Reserve's Research Coordinator

The life of a scientist is not what you see in Big Bang Theory, nor full of the animal encounters of the Wild Kratts - though we do have our moments! Our summer interns and research associates have been dipping their toes into the world of marine science, learning the many high tech and low tech



methods for understanding our environment. Much of our work centers around identifying the level and sources of contamination to local waters. We've sampled the waters of Duck River and Lieutenant River to identify levels of bacterial contamination to our local streams. Coffee grinders are excellent for pulsing clumps of dried sediment to dust so we can determine just the right type of sediment to support eelgrass, a beneficial marine plant. GoPro cameras are our go-to for assessing which fish we find in marshes. And starting this week, we'll be "grabbing" for seaweed to see which bays have the greatest diversity and amount - a wonderful chance to practice our new snorkeling skills and to kayak our way through the Reserve. Next year, we hope to start involving volunteers in these activities - getting our broader community to dip their toes into our watery world!



The Reserve's Education Coordinator Larissa Graham and Research Coordinator Jamie Vaudrey were interviewed by Connecticut East for National Ocean Month.

[Listen here](#)

## Reserve Updates

### Plant "camp" registration is open

The Reserve is partnering with **NEAPMS** and **Project Oceanology** to host a three day "Plant Camp" in September for decision makers (e.g. municipal and state agencies, NGOs, consultants and academics) wanting to learn more about freshwater invasive plant identification, data collection, and best management practices. The event will be located at UConn's Avery Point Campus and will include site visits to Cedar Lake (at YMCA Camp Hazen) and the Salmon River (tributary of the CT River). Contact the Reserve's Coastal Training Coordinator Katie at [katie.lund@uconn.edu](mailto:katie.lund@uconn.edu) to learn more.

### Attention environmental educators

As a follow up to our Educator Needs Assessment, we're reaching out to environmental education organizations to see what programs already exist that meet the needs of teachers. This will help the Reserve identify gaps and identify our own unique niche. If your organization offers environmental programming - of any kind, to any grade, at any time - please fill

### Come rock with us

Our Reserve staff will be at the Town of Groton's Summer SoundWaves Concert Series on July 20th. Come visit with us at our Reserve booth as you listen to the tunes of the Ryan Montbleau Trio. Learn more by visiting the **Town's website**.

### Invasive plant mapping

The Reserve team has been busy cataloging the presence of invasive plant species in Bluff Point, as part of a three year grant funded effort to understand the distribution of coastal and upland invasive plants throughout the reserve. Future efforts will include survey work in other Reserve properties: Haley Farm, Lord's Cove, and Great Island. While this effort does not involve removal of invasive plants, it sets the table for future grant writing efforts, stewardship days, and other reserve efforts, which may focus on targeted removal of invasive species and/or native plantings. If you're in the neighborhood and see us out on the trails, please don't hesitate to say hi

out **our survey!**

or stop us to ask any questions about this or any of the other Reserve projects!



This summer, we are fortunate to have a group of passionate undergraduates working with us. Learn more about each of them by clicking on the box below.

[Meet our Summer Team](#)

## Learn more about the Reserve

In addition to the 50,205 acres of subtidal area, the Reserve includes 1,955 acres of state-owned land. State park locations are accessible to the public and offer a variety of recreational opportunities. Natural area preserves and coastal reserves do not widely support active recreation but can easily be enjoyed via kayak or canoe from several nearby public launch sites.

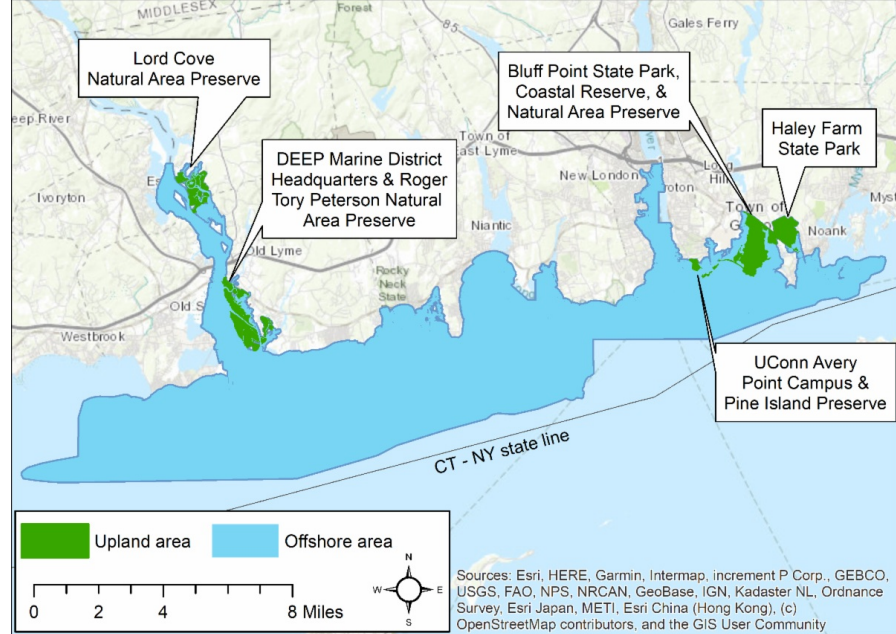
### Want to get outside?

Explore the **CT Trail Finder** for hiking trails.

Explore the **CT Coastal Access Guide** to find a place to launch your



boat or kayak, sit by  
the water, or  
bird watch.



Connecticut National Estuarine Research Reserve  
University of Connecticut - Avery Point  
1084 Shennecossett Rd  
Groton, CT 06340

[CTNERR@uconn.edu](mailto:CTNERR@uconn.edu)

Visit our Website

Email

in Share

f Post

Connecticut National Estuarine Research Reserve | 1084 Shennecossett Rd, Groton, CT 06340

[Unsubscribe \[ctnerr@uconn.edu\]\(mailto:ctnerr@uconn.edu\)](#)

[Update Profile](#) | [Constant Contact Data Notice](#)

Sent by [ctnerr@uconn.edu](mailto:ctnerr@uconn.edu) powered by



Try email marketing for free today!