



Connecticut

NATIONAL ESTUARINE RESEARCH RESERVE



Visitors overlook the Long Island Sound at Bluff Point (Judy Benson, CTSG)

Welcome to the Reserve's E-newsletter

The Connecticut National Estuarine Research Reserve has a brand new website, an office full of passionate staff, and is starting to build its programming. We'll keep you updated on our progress but, in the meantime, please visit our website and follow us on social media.

[Visit the Reserve's Website](#)



Message from George McManus, the Reserve's Interim Manager

Greetings! And welcome to the Connecticut National Estuarine Research Reserve's email list. Our Reserve is the newest of

the thirty reserves in the system, and represents a partnership among UConn, the Connecticut Department of Energy and Environmental Protection (CT DEEP), and the National Oceanic and Atmospheric Administration (NOAA).

Our first year of operation will conclude at the end of June and we have much activity to report. We are fully staffed with the coordinators who will manage the four key elements of the reserve – stewardship, education, research, and coastal training. We've hired a technician to help with our environmental monitoring program and are purchasing an array of environmental sampling gear and equipment for our research and education programs. In the coming months we will be hiring a Reserve Manager.



It is important to note that designation of these properties as part of the reserve does not impose new regulations or limits on the activities that can occur there. Fishing, hiking, swimming and other activities allowed before the Reserve was created will still be allowed. Having these areas designated as a reserve does, however, make us eligible to apply for funding for research, education, stewardship, and training in the Reserve and sets up a system of environmental monitoring that will allow us to assess the health and functioning of these areas in the coming years.

Please join us in this exciting new venture by visiting the Reserve, getting involved as a volunteer, or just continuing to peruse **our website** to learn about our programs!



Over the past six months, we've hired seven full-time staff and our undergraduate summer team will soon be coming onboard.

Meet our Team

Reserve Updates

Educators, we want to hear from you!

We've launched an Educator Needs Assessment to determine what type of programming teachers are looking for. If you're a teacher, please fill out **our survey!**

"T" is for Training

Did you know that the "T" in CTP (Coastal Training Program) can also include process training like NOAA's **meeting facilitation** and **planning effective projects for coastal**

Summer Research

This summer, we'll have a large team of undergraduate assistants who will be helping us map invasive species in Bluff Point State Park, search for underwater eelgrass using GoPros, and basically jump start the Reserve's research and monitoring program. Be sure to follow us on social media to see what we are up to!

Stay Tuned for More Updates

communities? We will partner with NOAA trainers to offer these opportunities. If you are interested, please contact CTNERR.Training@uconn.edu. The CTP will also be working with partners to launch eelgrass and living shoreline programming.

In addition to launching our website and social media pages, we are hiring a Communications Specialist for the summer. Keep an eye out for Reserve updates and fun videos!

Learn more about the Reserve

Designated in 2022, the Reserve is one of 30 Research Reserves in the country that are focused on research, education, and stewardship of estuarine ecosystems. With more than 50,000 acres of marsh, upland, and open water in Long Island Sound, Fishers Island Sound, and the lower Connecticut and Thames Rivers, the Reserve provides essential habitat for wildlife, offers educational opportunities for students, teachers and the public, and serves as a living laboratory for scientists. Learn more about the Reserve by clicking on the links below.

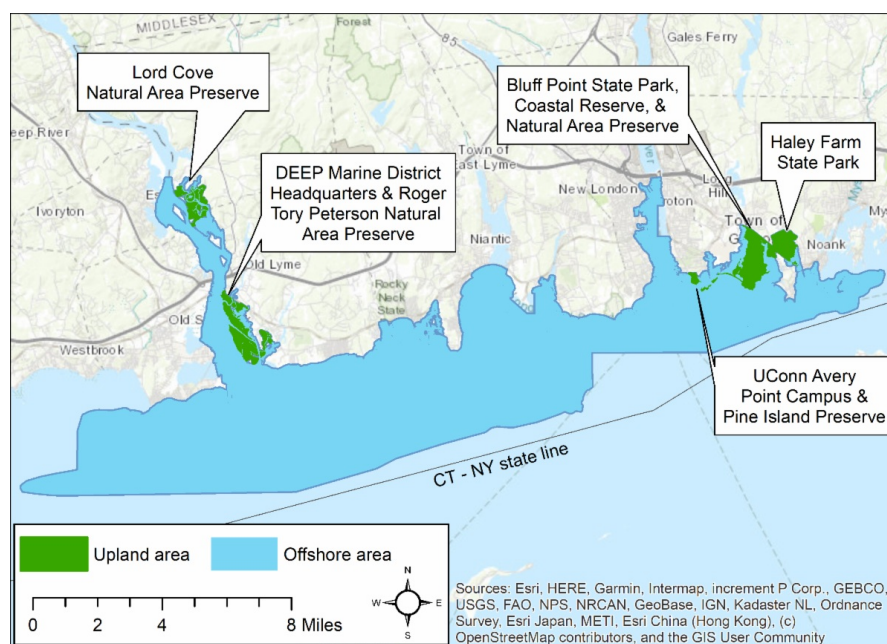
[About](#)

[Explore the Reserve](#)

[News](#)

[Donate](#)

[Contact](#)



Connecticut National Estuarine Research Reserve
University of Connecticut - Avery Point
1084 Shennecossett Rd
Groton, CT 06340

CTNERR@uconn.edu

[Visit our Website](#)

[Email](#)

[in Share](#)

[f Post](#)

Connecticut National Estuarine Research Reserve | 1084 Shennecossett Rd, Groton, CT 06340

[Unsubscribe \[ctnerr@uconn.edu\]\(mailto:ctnerr@uconn.edu\)](#)

[Update Profile](#) | [Constant Contact Data Notice](#)

Sent by ctnerr@uconn.edu powered by



Try email marketing for free today!