

10:00 - 10:05 (5 mins)	Welcome & Agenda Overview	Katie Lund, CT NERR
10:05 - 10:35 (30 mins)	Draft BMPs for Seed Transport: Update & Discussion	Steve Schott, Cornell Cooperative Extension
10:35 - 11:00 (25 mins)	2022 Eelgrass Management & Restoration Strategy: Status Report and Discussion (what's been accomplished, what's been started, and what priorities are is still in need of funding)	Cayla Sullivan, EPA LISS Office
11:00 - 11:20 (20 mins)	2025-2027 LISS Supplemental Proposal Elements: Continued and new activities for aquaculture-eelgrass interactions and boater education	Katie Lund, CT NERR Tessa Getchis, CT Sea Grant
11:20 – 11:30 (10 mins)	Spring Workshop Planning	ALL
11:30 – 12:00 (30 mins)	Agency/Partner Updates	ALL

Funded by:



Facilitated by:



Collaborative LISS Supplemental Funding (2023-2025):

1. CT NERR staff time to plan, convene, and facilitate meetings + draft supporting materials + advise on research and monitoring
2. Four meetings each year (three virtual, one in-person workshop)
3. White paper for bi-state eelgrass seed transport guidance
4. Bi-state management assessment

Funded by:

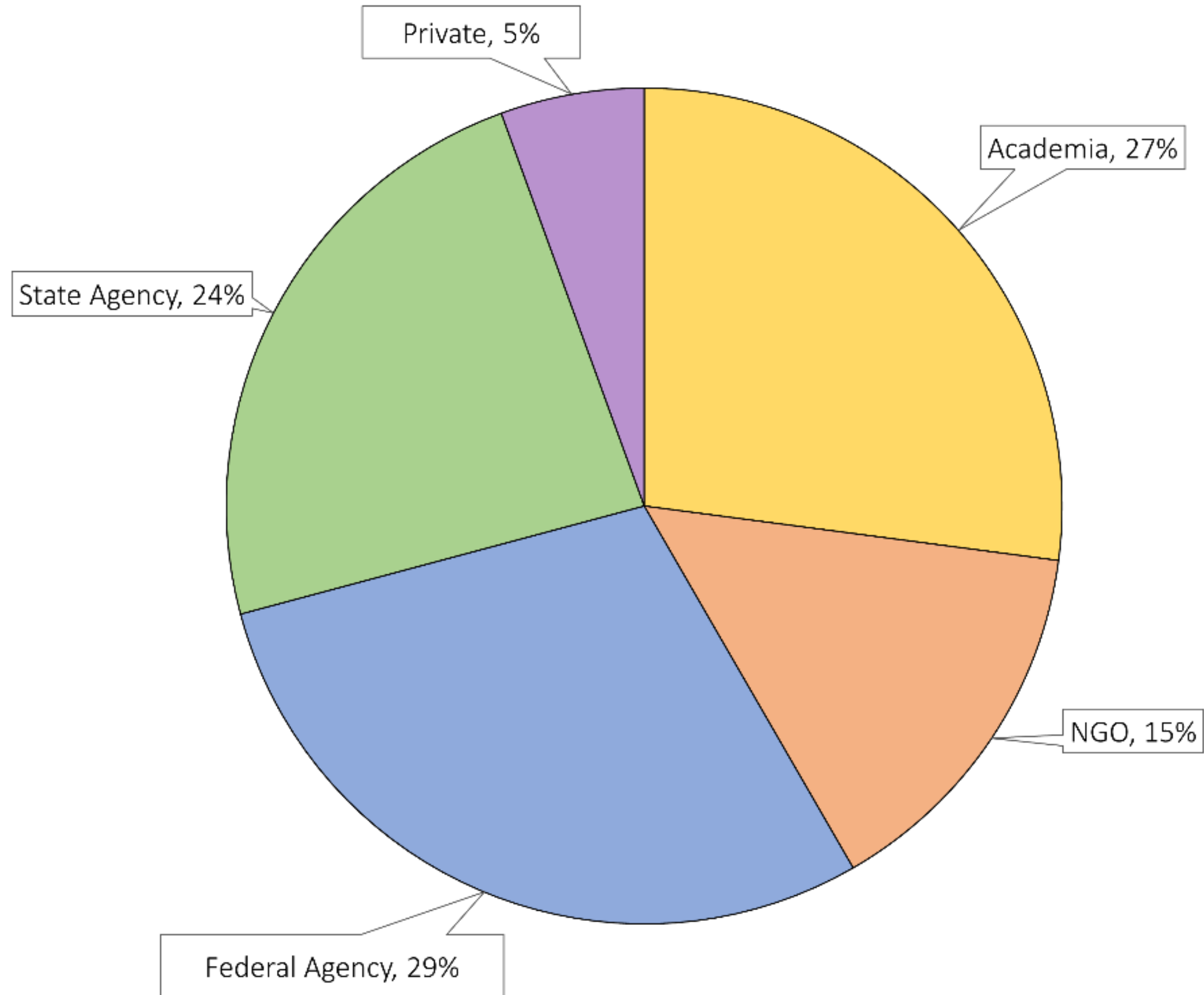


Facilitated by:



2023 original participant list = 53

2025 participant list = 144



Proposed LISS Supplemental Funding (2025-2027):

1. CT NERR staff time to plan, convene, and facilitate meetings + draft supporting materials + advise on research and monitoring
2. Four meetings each year (three virtual, one in-person workshop)
3. Improve understanding of aquaculture and eelgrass interactions
4. Pilot project: bi-state approach for seagrass state boating

Funded by:



Facilitated by:

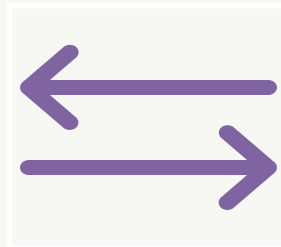


Management Recommendations



Establish Seagrass Management Areas (NYSDEC)

Improve understanding of aquaculture/
eelgrass interactions



Interstate Seed Transport Guidance & BMPS
(LIS Eelgrass Collaborative)

Best Boating Practices

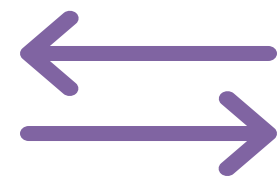


2025-2027 LISS Supplemental Request:



Establish Seagrass Management Areas (NYSDEC)

Improve understanding of aquaculture/
eelgrass interactions



Interstate Seed Transport Guidance & BMPS
(LIS Eelgrass Collaborative)

Best Boating Practices



Priority: Better understand aquaculture & eelgrass interactions

Project leads: CT Sea Grant/UConn Extension & UConn CLEAR (+ Collaborative)

Methods:

1. GIS based exclusionary analysis to identify human use areas (e.g. navigation channels, mooring fields) that restrict eelgrass restoration activity.
Meet with agency staff/working groups.
2. Compile existing spatial data (e.g. eelgrass habitat, aquaculture and recreational shellfish areas) & combine in a new map viewer with the updated Eelgrass Habitat Suitability Index (EHSI) Model.
3. Convene local & state officials and aquaculture producers to understand perceptions, review map viewer and indicate potential areas for restoration with low resource conflict.

Priority: Bi-state approach for seagrass-safe boating

Project lead: CT NERR (+ Collaborative participants)

Methods:

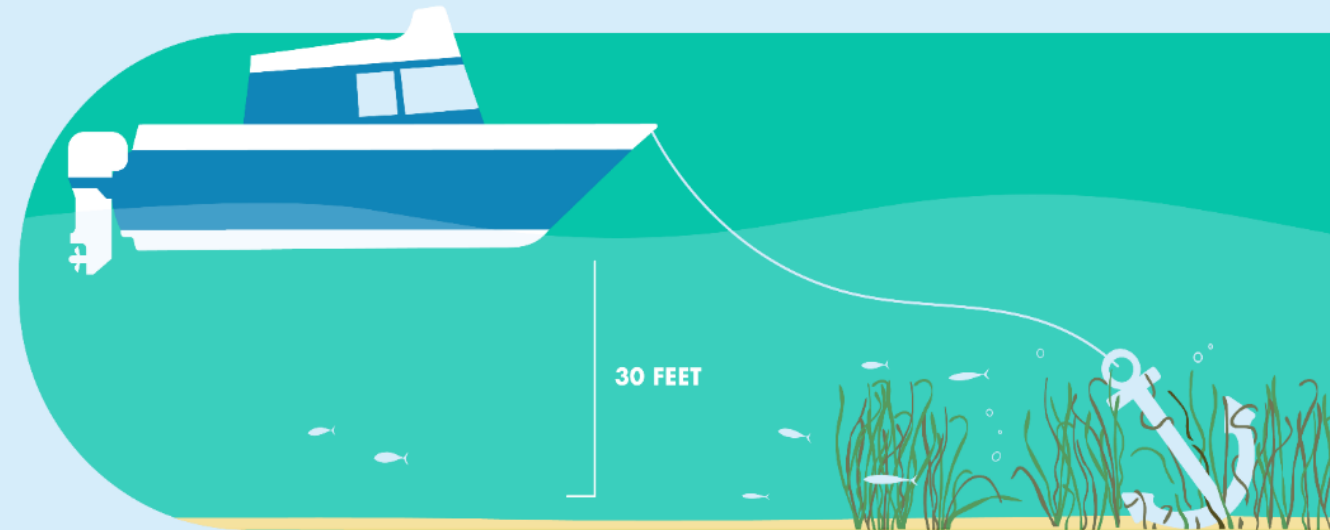
1. Review existing FISMC outreach materials and methods for bi-state approach.
2. Meet with NYSDEC and CT DEEP boating division staff to review existing materials, discuss modification, and identify one pilot boat ramp and outreach strategy in each state.
3. Finalize outreach materials content & design.
4. Implement at two sites in summer 2027.

YOUR ACTIONS MATTER

Dragging Anchor

✗ Anchoring directly in the seagrass

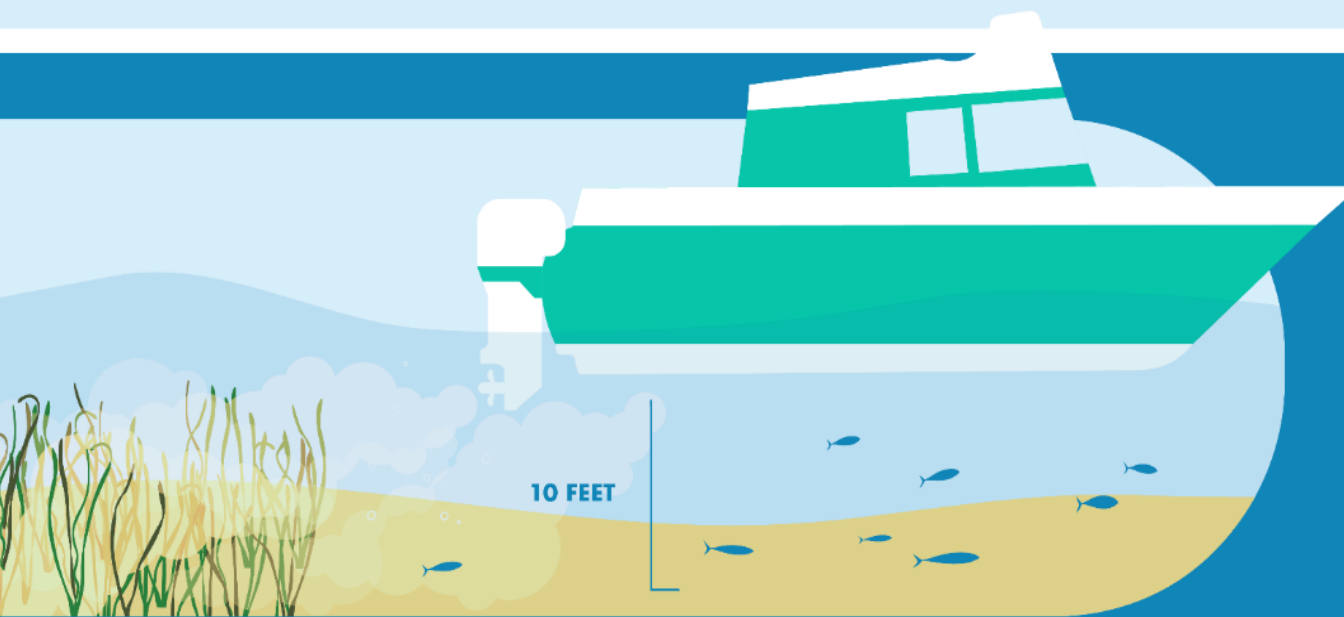
✓ Anchoring in the sand



Motor Turbulance

✗ Revving and speeding in shallow water

✓ Slowing down in shallow water



Propeller Scarring

✗ Uprooting or slicing eelgrass with propellers

✓ Trimming up your motor and idling safely



Questions?

Workshop 2025

Possible Dates: May 28, 29 or June 12

Time: 10:00 - 3:30

Location: UConn Avery Point

10:00 - 11:00 Welcome, Featured Speakers & Panel Discussion

Focus: NPS and EPA eelgrass restoration projects and techniques - common garden & genetics

Speakers (30 mins):

- Stephanie Kamel – Professor, UNCW Department of Biology and Marine Biology
- Phil Colarusso – Marine Biologist, U.S. EPA

Panel (30 mins):

- Stephanie Kamel, Bradley Peterson (Stony Brook Univ), Phil Colarusso, Suzy Ayvazian (EPA)

11:00 - 12:00 (potential topics for Collaborative updates – POLL)

Please select 3 topics from the list below that you would like to hear updates on:

- CT and NY planning updates
- Bi-state Management Assessment draft report & next steps
- Seed based restoration planning
- Eelgrass mapping (Tier 1) update
- Using satellite imagery as tool to determine flowering density
- Habitat Suitability Index model (EHSI) update

12:00 – 12:45 - Lunch

1:00 – 2:00 (2 group rotations – 30 mins each)

- **Poster Session**
- Rankin Lab tour - viewing & discussion of possible restoration facility

2:00 – 3:00

Breakout Sessions (TBD)

3:00 – 3:30

Debrief/Next Steps

Input /
Questions?